

10天7晚
美食+

蓝花楹+波尔蒂芒海景洞

网红景点之旅 葡萄牙



f BPHoliday
i BPHoliday
v BPHoliday

www.bpholiday.com
Tel: +04 835 0096

bp
holiday

行程

DAY 01 吉隆坡 - 葡萄牙

DAY 02 抵达里斯本 (早/午/晚餐)

- 抵达里斯本后, 开始里斯本城市之旅
- 参观拍摄当地的传统单道电车
 - 享用当地美食小吃市集
 - 参观海上城堡
 - 还有著名的耶稣雕像

DAY 03 里斯本 - 波尔图 (早/午/晚餐)

导游开车带领前往波尔图。途中将参观科英布拉古大学和奥比都斯市。

在波尔图过夜

DAY 04 波尔图 (早/午/晚餐)

- 波尔图观光
- 路易斯桥
 - 灵魂礼拜堂
 - 里贝拉广场
 - 马托西纽什海滩
 - 圣本图站
 - Livraria Lello (包含入场费)
 - 大教堂

之后前往, 参观纳扎雷灯塔
在拿撒勒过夜

DAY 05 波尔图 - 辛特拉 - 卡斯凯什 (早/午/晚餐)

开车去辛特拉和卡斯凯什

- 观光:
- 佩纳宫 (包含入场费)
 - 金塔德雷加莱拉宫殿 (包含入场费)
 - 摩尔城堡 (包含入场费)
 - 罗卡角海崖

*还可以观看罗卡角海崖的日落景观
在卡斯凯什过夜

DAY 06 卡斯凯什 - 波尔蒂芒 (早/午/晚餐)

乘车前往波尔蒂芒
在当地餐厅享用午餐
乘快艇探索海景洞 (持续时间估计 2 小时) 旅途中可能会看到海豚穿梭于海面哦!

傍晚, 在风景秀丽的海滩欣赏日落美景

在波尔蒂芒过夜

DAY 07 波尔蒂芒 - 拉各斯 (早餐/-/-)

可选择远足和步行到 (蓬达皮埃达德) 黄金悬崖。在旅途中, 您可以看到许多风景优美的海滩和壮丽的岩石。

下午在老城区休闲购物。

日落后返回酒店。

*您可以选择自由行, 那么将不跟随队伍远足和步行到 (蓬达皮埃达德) 黄金悬崖。

DAY 08 拉各斯 - 里斯本 (早餐/-/-)

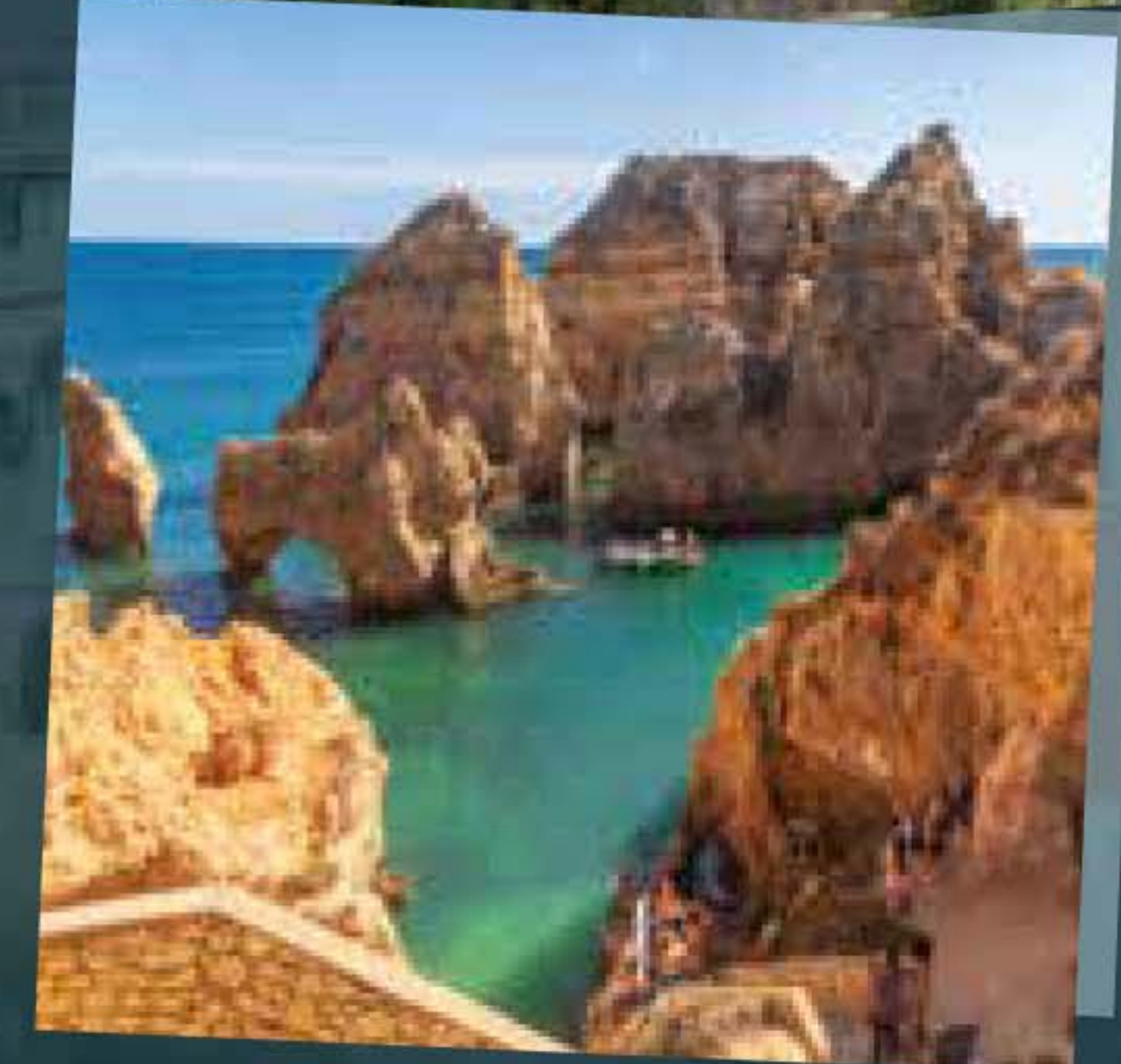
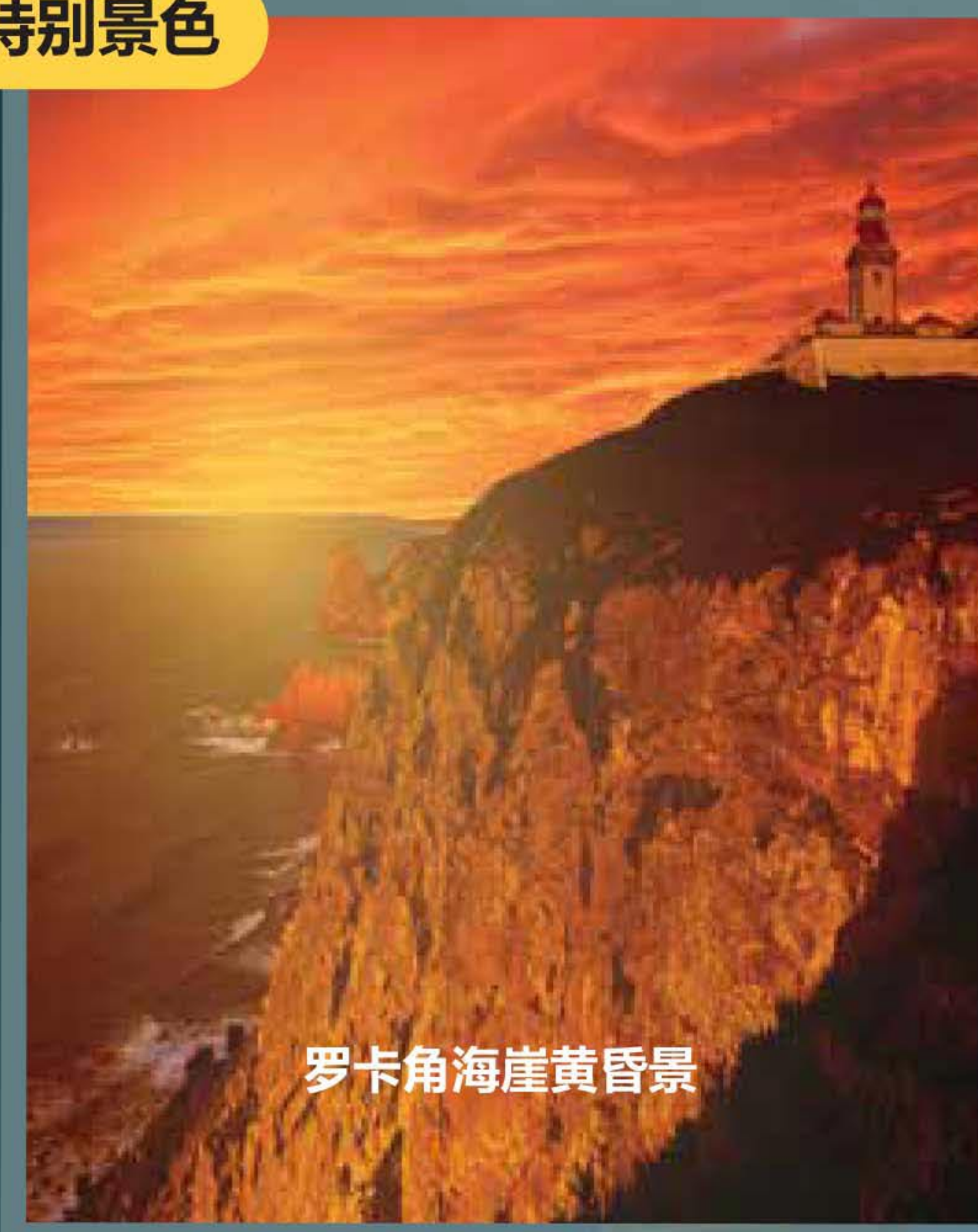
开车回里斯本
之后自由行, 可以选择在当地购物。

DAY 09 里斯本 - 马来西亚 (早餐/-/-)

从里斯本起飞

DAY 10 到达马来西亚

特别景色



地图

10天7晚 - 葡萄牙美食+文化景点之旅

行程亮点!

葡萄牙的主要城市和古朴小镇以其高端美食和迷人的夜生活而闻名于世。从西海岸到葡萄牙南部，您会发现美丽的海滩、渔村、联合国教科文组织世界遗产和大量的葡萄酒。葡萄牙人对美食充满热情，其烹饪风格是他们国家独有的。里斯本的地方菜肴往往以海鲜和鱼类为主，这座城市的航海历史深深的影响着当地人们对香料的执着。

1. 带你体验和品尝大部分葡萄牙的各式经典美食和小吃
2. 乘船游览波尔蒂芒海景洞
3. 前往世界最美丽的海滩
3. 几乎包含所有景点的入门票
4. 蓝花楹绽放季节 (五月六月)
5. 纳扎尔滩的巨浪

当地必尝美食



葡式蛋羹



西班牙油条



西班牙海鲜炖饭



中国菜



焖猪脚



烤鸭



烤乳猪



鳕鱼 (盐鳕鱼)

葡萄牙特色景区



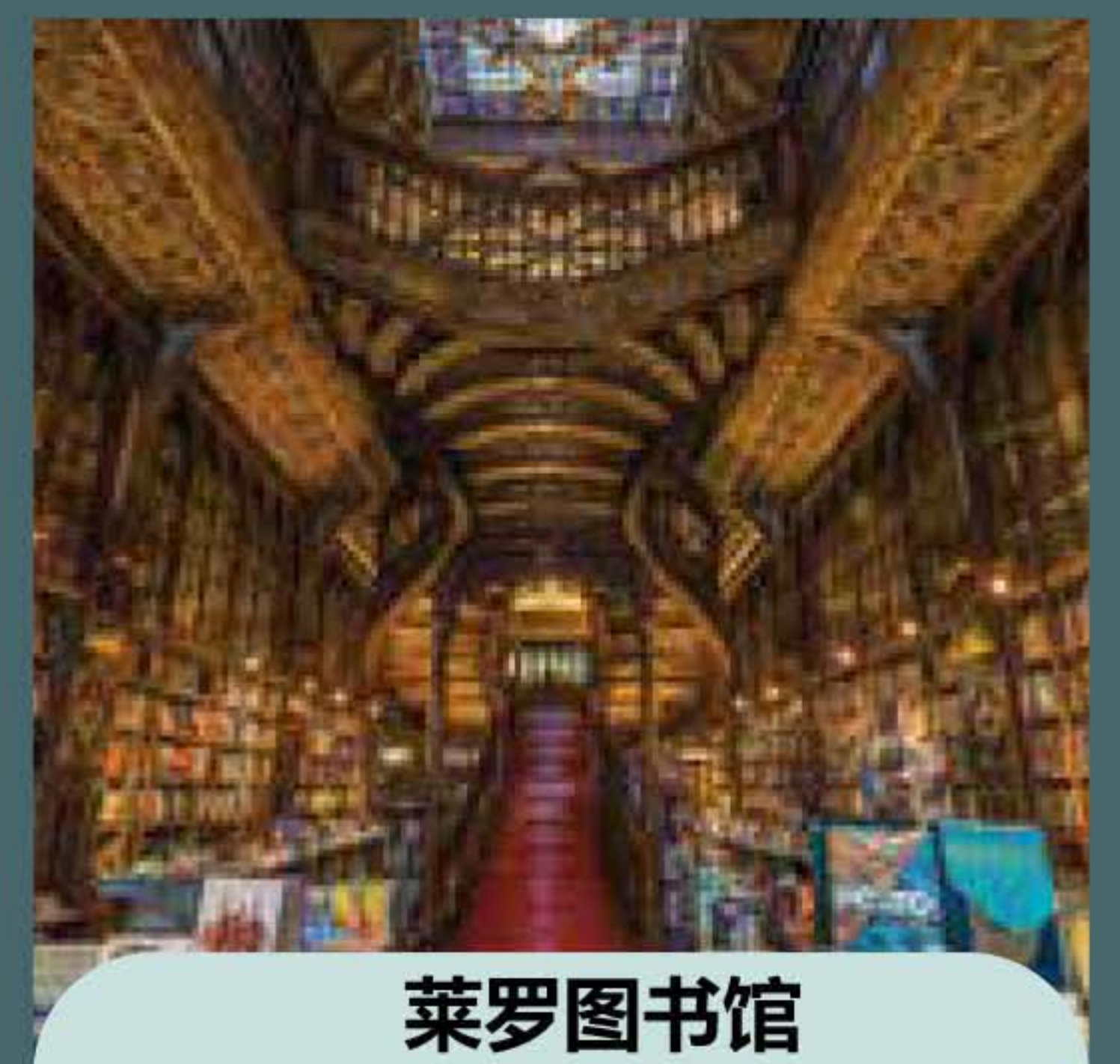
贝伦塔



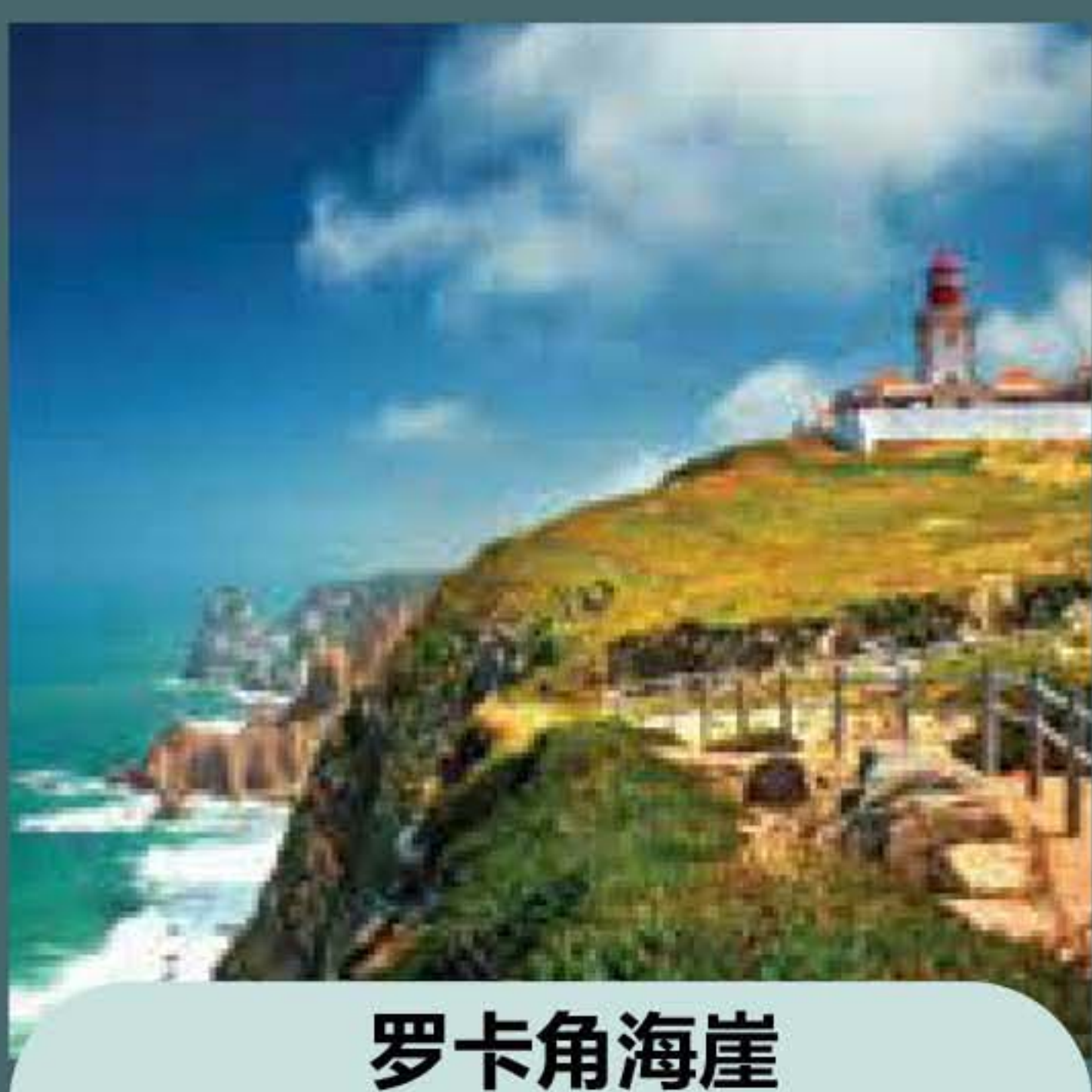
蓝花楹季节



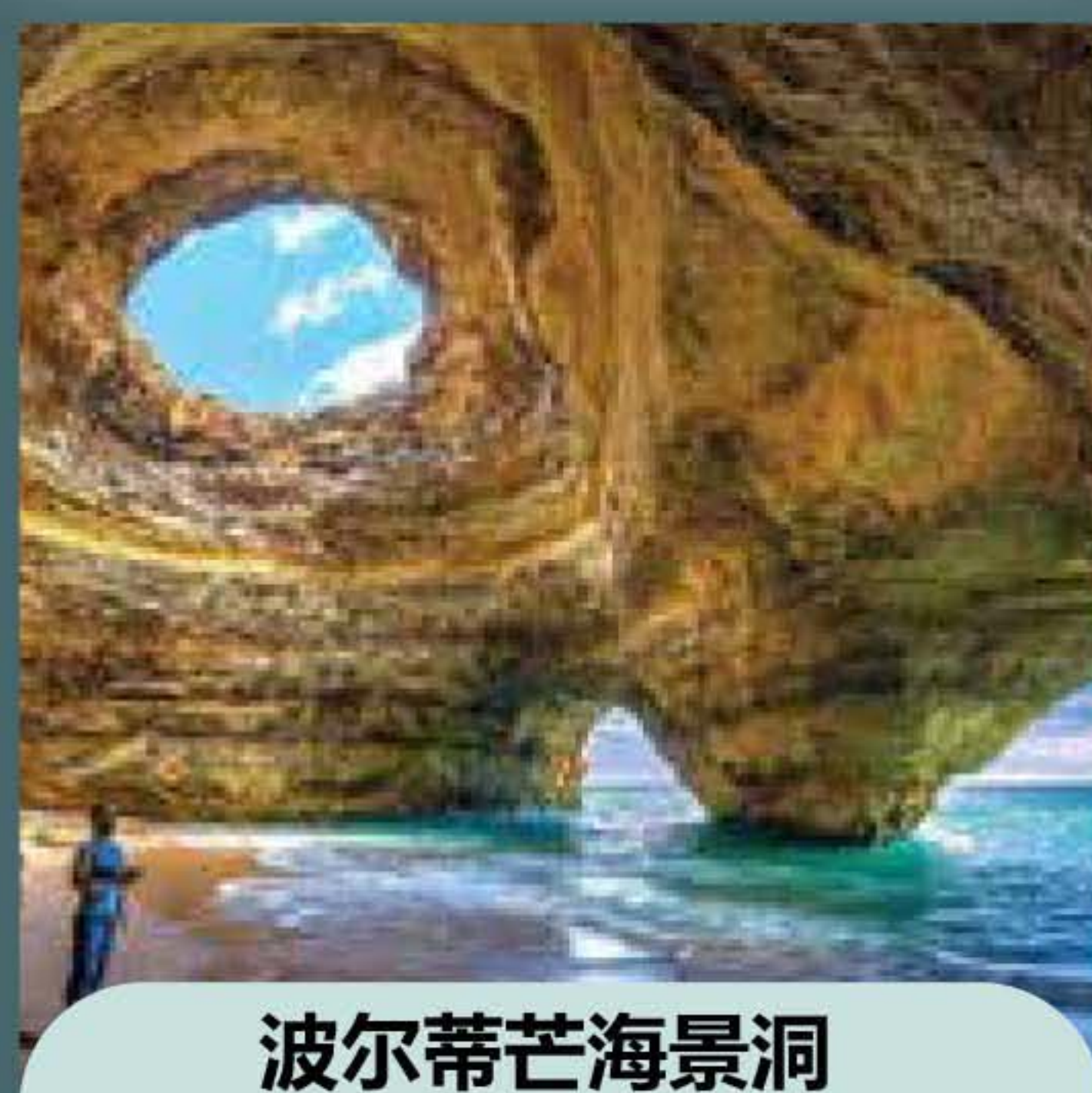
灵魂礼拜堂



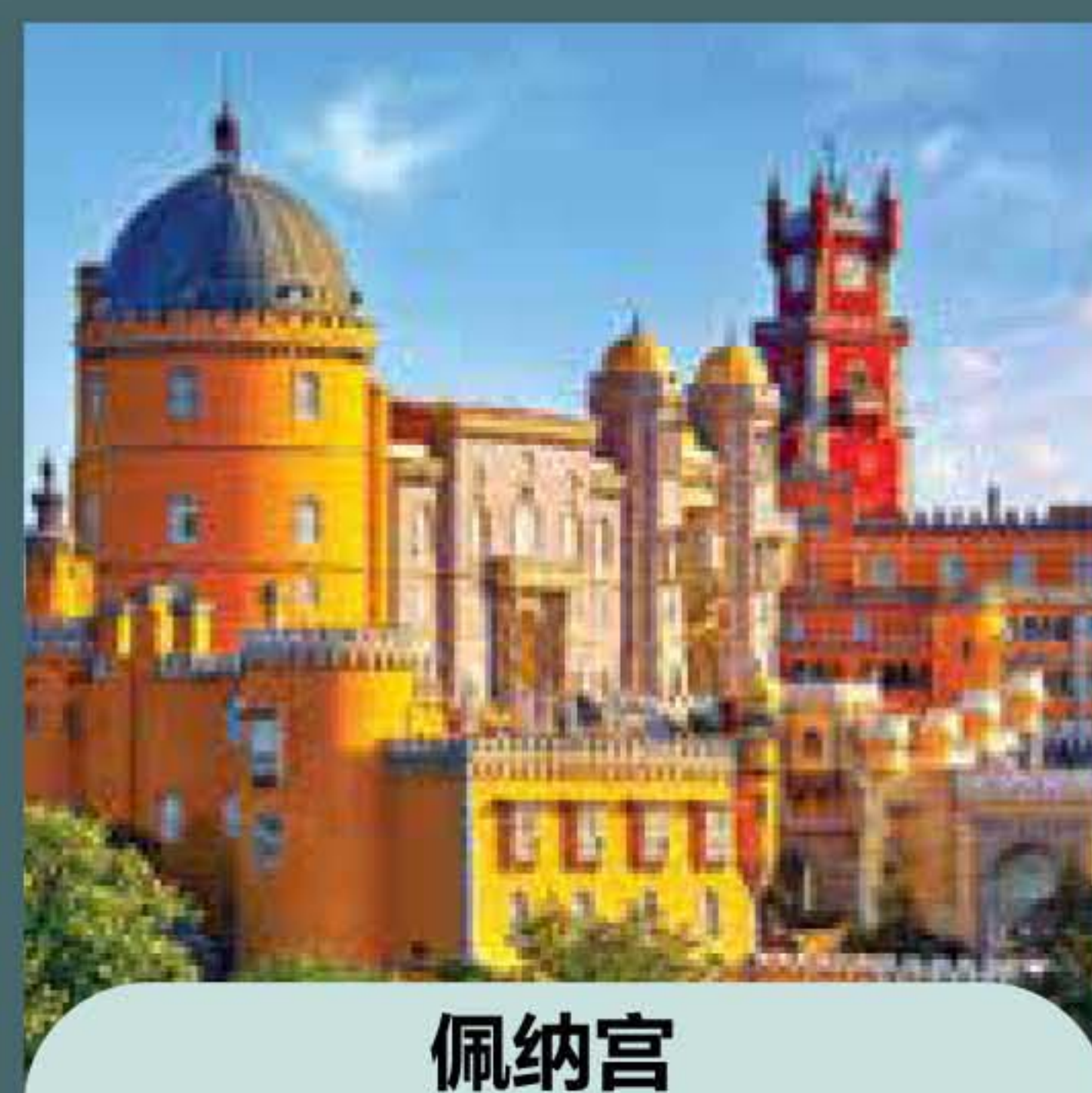
莱罗图书馆



罗卡角海崖



波尔蒂芒海景洞



佩纳宫



拿撒勒海滩

旅游信息

葡萄牙国家天气

一月: 8°C ~ 15°C
二月: 6°C ~ 19°C
三月: 10°C ~ 18°C
四月: 12°C ~ 20°C
五月: 14°C ~ 22°C
六月: 16°C ~ 25°C

七月: 18°C ~ 28°C
八月: 18°C ~ 28°C
九月: 17°C ~ 26°C
十月: 15°C ~ 23°C
十一月: 12°C ~ 18°C
十二月: 9°C ~ 15°C

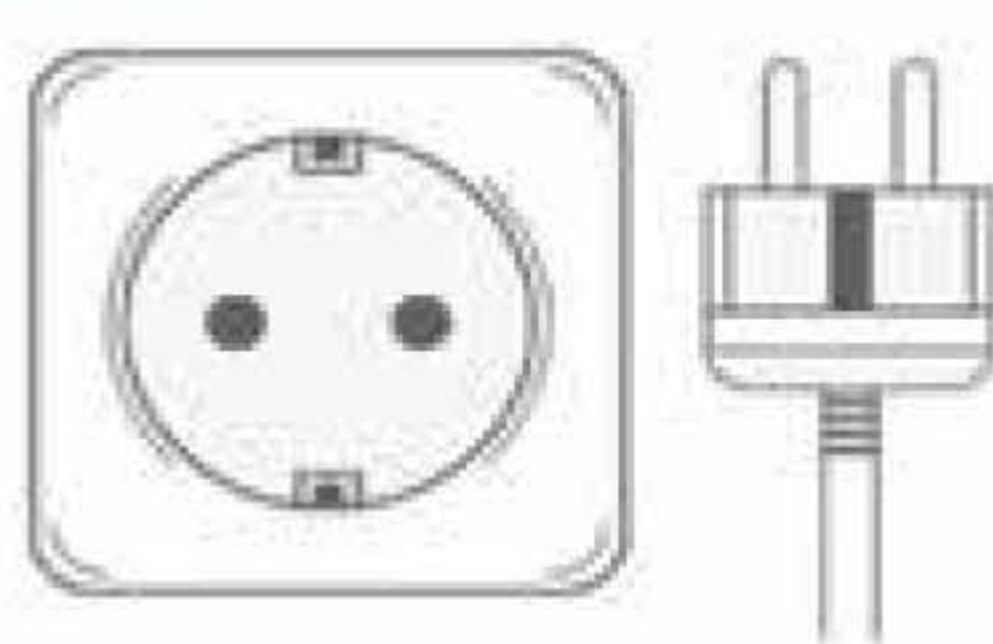
货币

欧元

时差

葡萄牙 (GMT+1)

当地插座



团费包括

• 往返国际机票

行李不超过20公斤
手提 32cm(h) x 42cm(w) x 25cm(d)
** 由于特殊的地质和天气, 非常
超重交通工具去旅行和当地都很危险
政府对此非常严格。

- 住宿 (双人间)
- 7晚酒店住宿
- 所有行程所提及的膳食
- 所有行程到访景点
- 领队全程陪同
- 私人空调巴士

团费不包括

- × 个人旅游保险
- × 超重行李费
- × 所有服务的额外小费
- × 自费 (洗衣费、开瓶费、
加餐等)
- × 行程外任何景点门票
- × 推荐额外自选旅游项目

Beautiful Planet Holiday Tour & Travel Sdn. Bhd. (58352M) KPL 5634

HQ:394A, 1st Floor, Wayton Court, Jalan Burmah, 10350 Penang, Malaysia. Tel: +604-226 8121 Website: www.bpholiday.com

(ICELAND) New Horizons Ehf (Kt. 541216 1700)

52 Holtsgata, 260 Reykjanesbar, Iceland. Tel: +354-857 0646 Website: www.n66.is

(THAILAND) Pristina Tours

HQ: 34/8 Thanon Thep Kasatri, Phuket 83200, Thailand. Tel: +86-076 377918 Website: www.pristinatours.com
Bangkok Branch: 273, Soi Ramkhamheng 21 (Soi Nawa Si), Phlap Phla, Wang Thongland, Bangkok 10310, Thailand. Tel: +86-023185280

10D 7N

Amazing Foodie &
Influencer Sceneries
of PORTUGAL

Jacaranda Season + Portimao Cave



 BPHoliday
 BPHoliday
 BPHoliday

www.bpholiday.com
Tel: +04 835 0096

bp
holiday

ITINERARY

DAY 01 ● **KUL - Portugal**

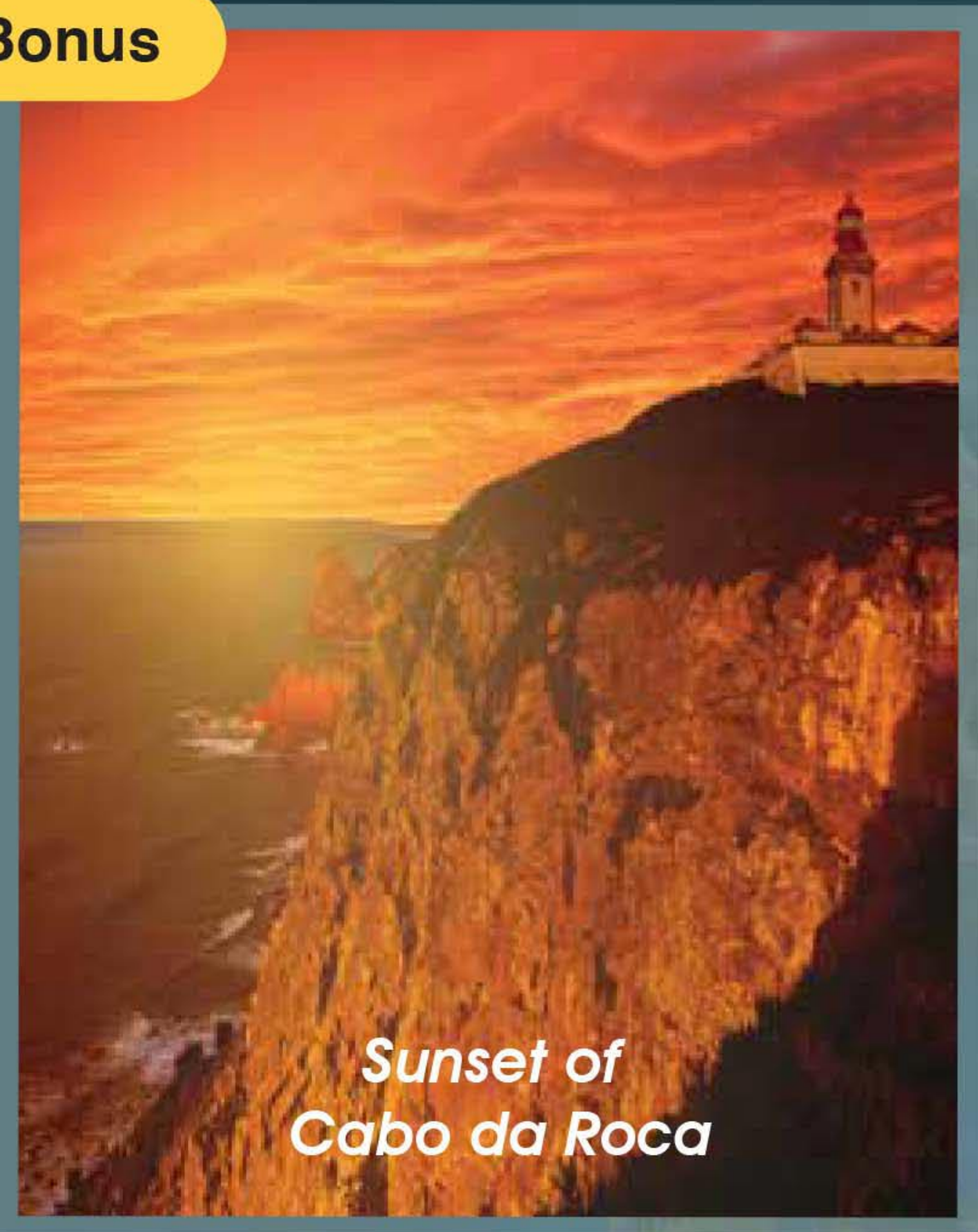
DAY 02 ● **Arriving Lisbon (B/L/D)**
Reach Lisbon and start City Tour
- Photo shooting traditional mono tram
- Enjoy Local Food Paradise
- The sea castle
- Jesus statue at beach side

DAY 03 ● **Lisbon - Porto (B/L/D)**
Driving to Porto. On the way will be visiting Coimbra Ancient University and Obidos city.
Overnight at Porto

DAY 04 ● **Porto (B/L/D)**
Sightseeing in Porto
- Luis Bridge
- Chapel of Souls
- Ribeira Square
- Matosinhos Beach
- Sao Bento Station
- Livraria Lello (*including entrance*)
- Cathedral

Visiting Farol de Nazare
Overnight at Nazare

Bonus



DAY 05 ● **Porto - Sintra - Cascais (B/L/D)**
Driving to Sintra and Cascais

Sightseeing:
- Palacio De Pena (*including entrance*)
- Quinta De Regalaria (*including entrance*)
- Castelo Dos Mouros (*including entrance*)
- Cabo da Roca

Bonus sunset view
Overnight at Cascais

DAY 06 ● **Cascais - Portimao (B/L/D)**
Driving to Portimao
Lunch at local restaurant
Explore Sea Cave by speed boat (Duration est. 2 hours) Possible sighting dolphins during the trip.

In the evening, sunset view at scenic beach
Overnight at Portimao

DAY 07 ● **Portimao - Lagos (B/-/-)**
Hiking and walking to Ponta da Piedade. During the journey you may view many scenic beaches.

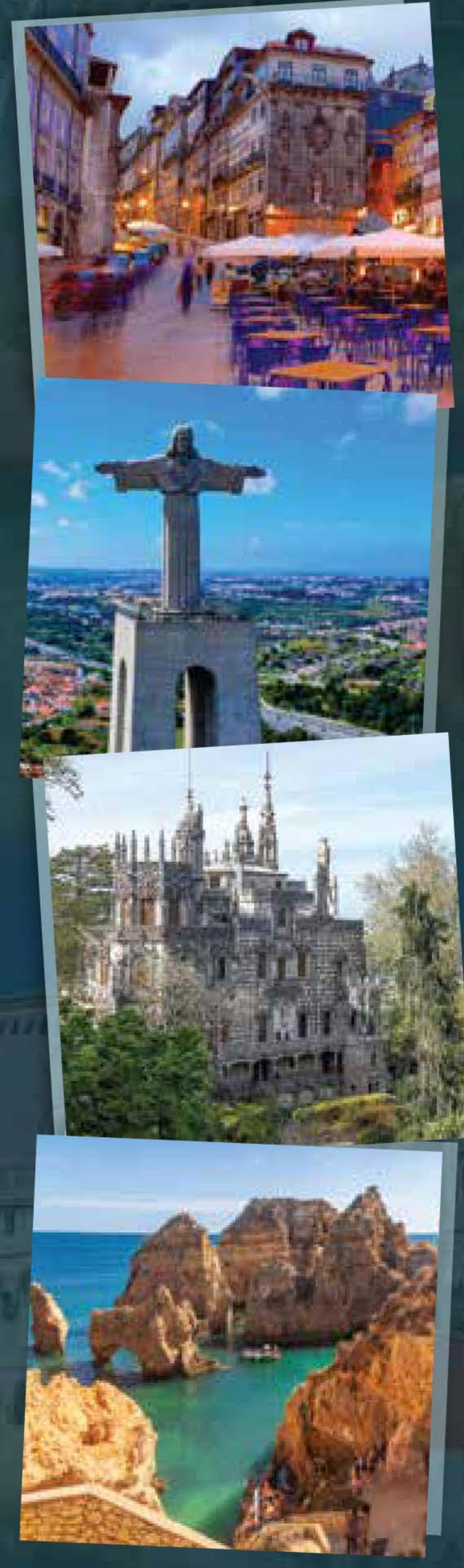
Afternoon leisure shopping in the old town.
Back to hotel after sunset.

*Free & Easy is available for this day if you choose to set yourself free mode away from the group.

DAY 08 ● **Lagos - Lisbon (B/-/-)**
Driving back to Lisbon
Free and easy. Final Shopping with own transport.

DAY 09 ● **Lisbon - Malaysia (B/-/-)**
Fly leaving from Lisbon

DAY 10 ● **Reach Malaysia**



MAP

10D7N - Amazing Foodie & Scenery of Portugal

Portugal's major cities and quaint towns are known around the globe for their high-end food and beguiling nightlife. From the west coast to southern Portugal, you'll find beautiful beaches, fishing villages, UNESCO World Heritage Sites, and lots of wine. The Portuguese are passionate about food, with a style of cooking that is distinctive to their country. The regional dishes of Lisbon tend to be centred around seafood and fish, but the city's history of seafaring means there are additions of spices, chilli and influences from around the world.

Highlights!

1. Experience and taste most of delicious in Portugal
2. Boat tour to sea cave hoping
3. Including most of entrance fees
3. Visiting most beautiful beach in the world.
4. Blue Jacaranda Bloom (May - June)
5. Giant Wave at Nazare

Amazing Local Cuisines



Portuguese Custard



Churro



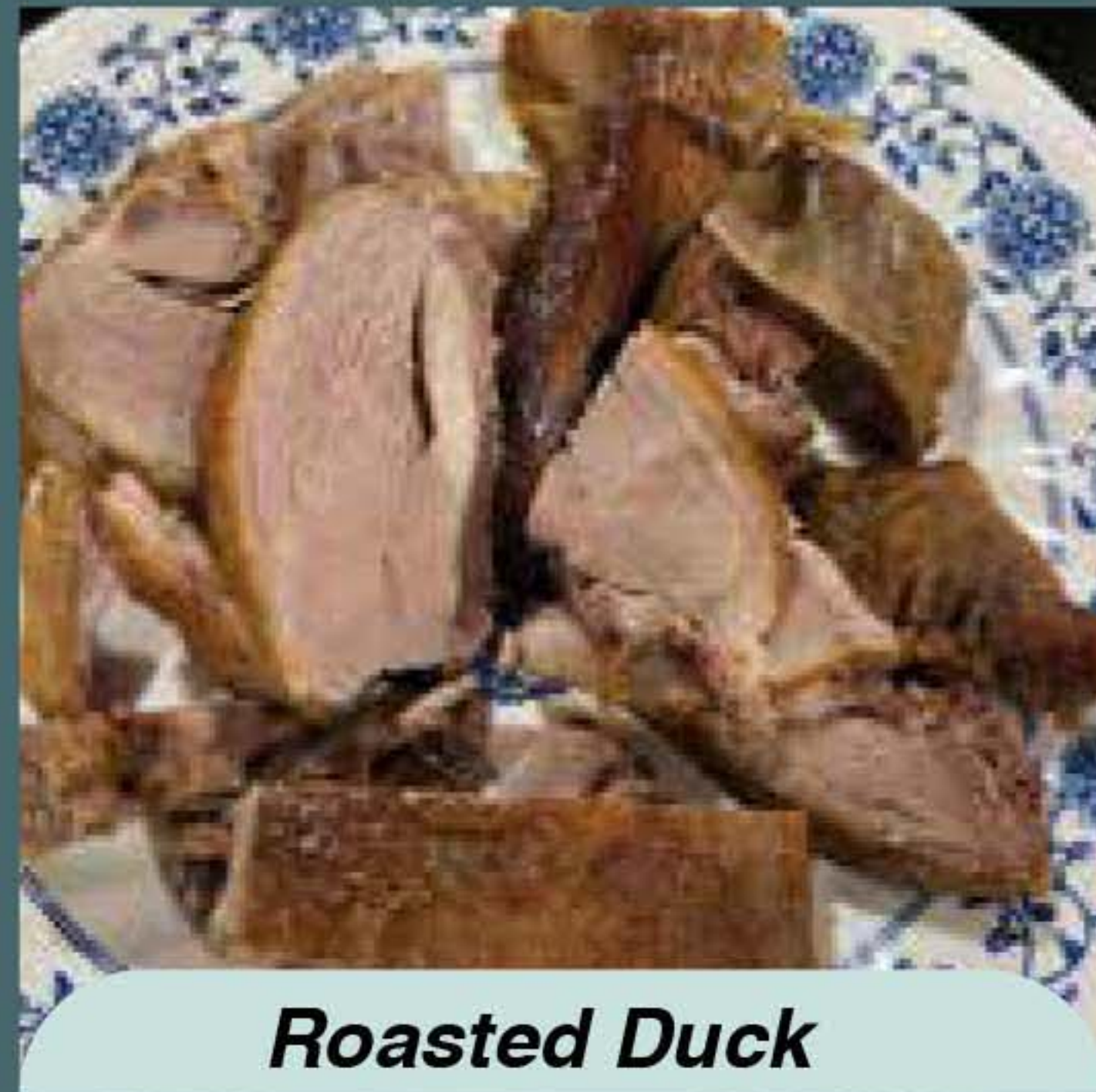
Spanish Paella



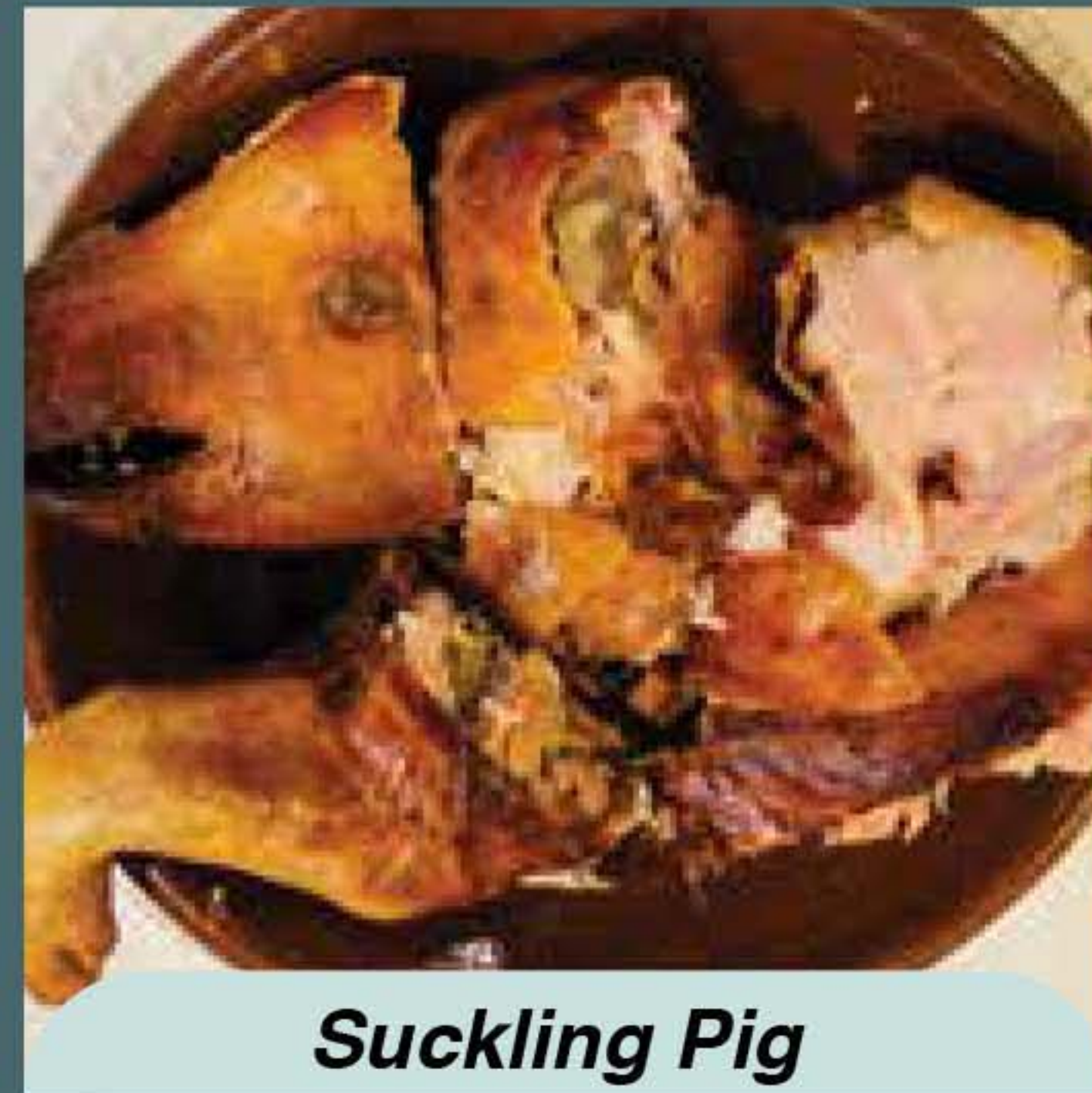
Chinese Cuisine



Manitas De Cerdo



Roasted Duck

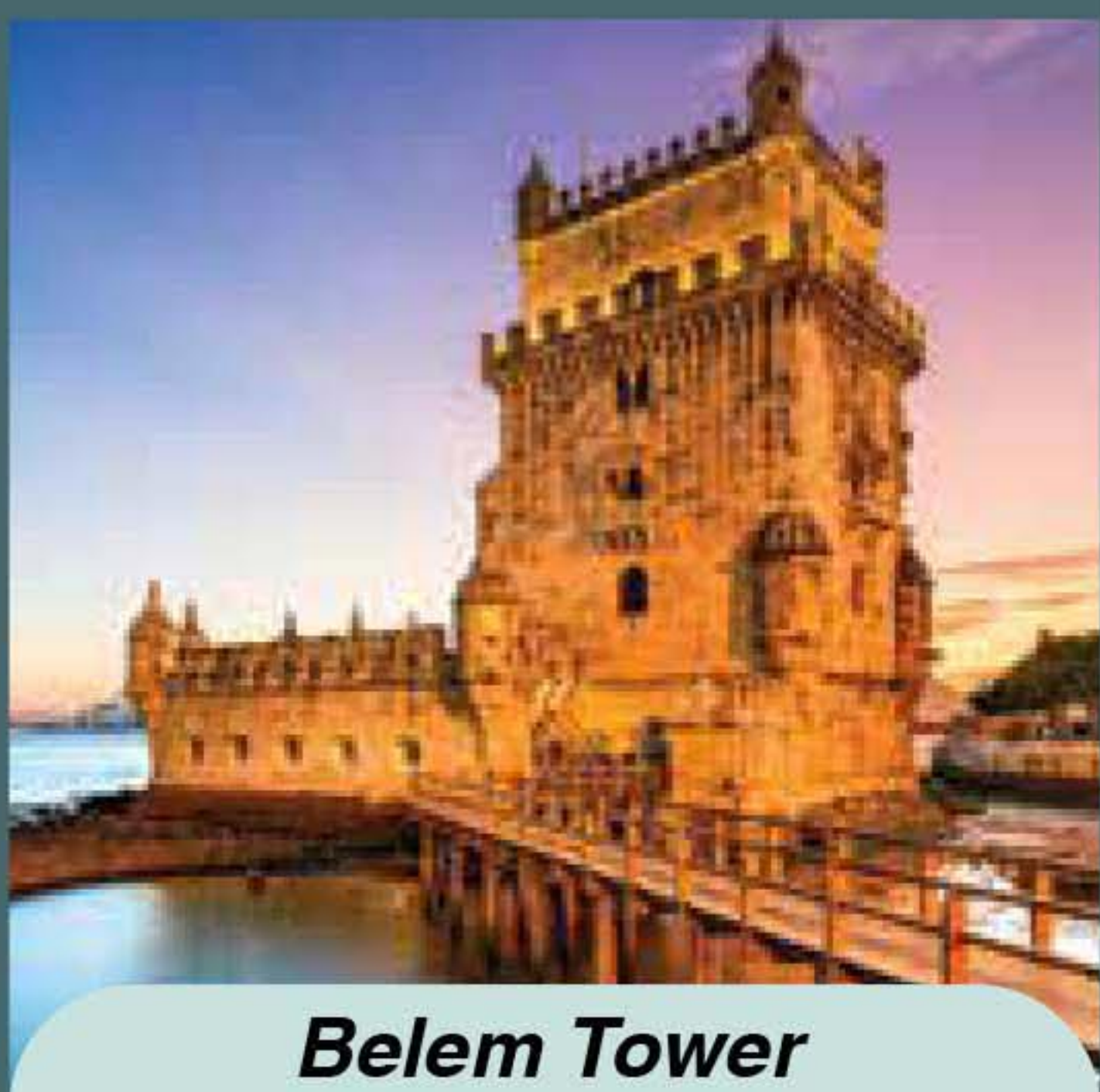


Suckling Pig

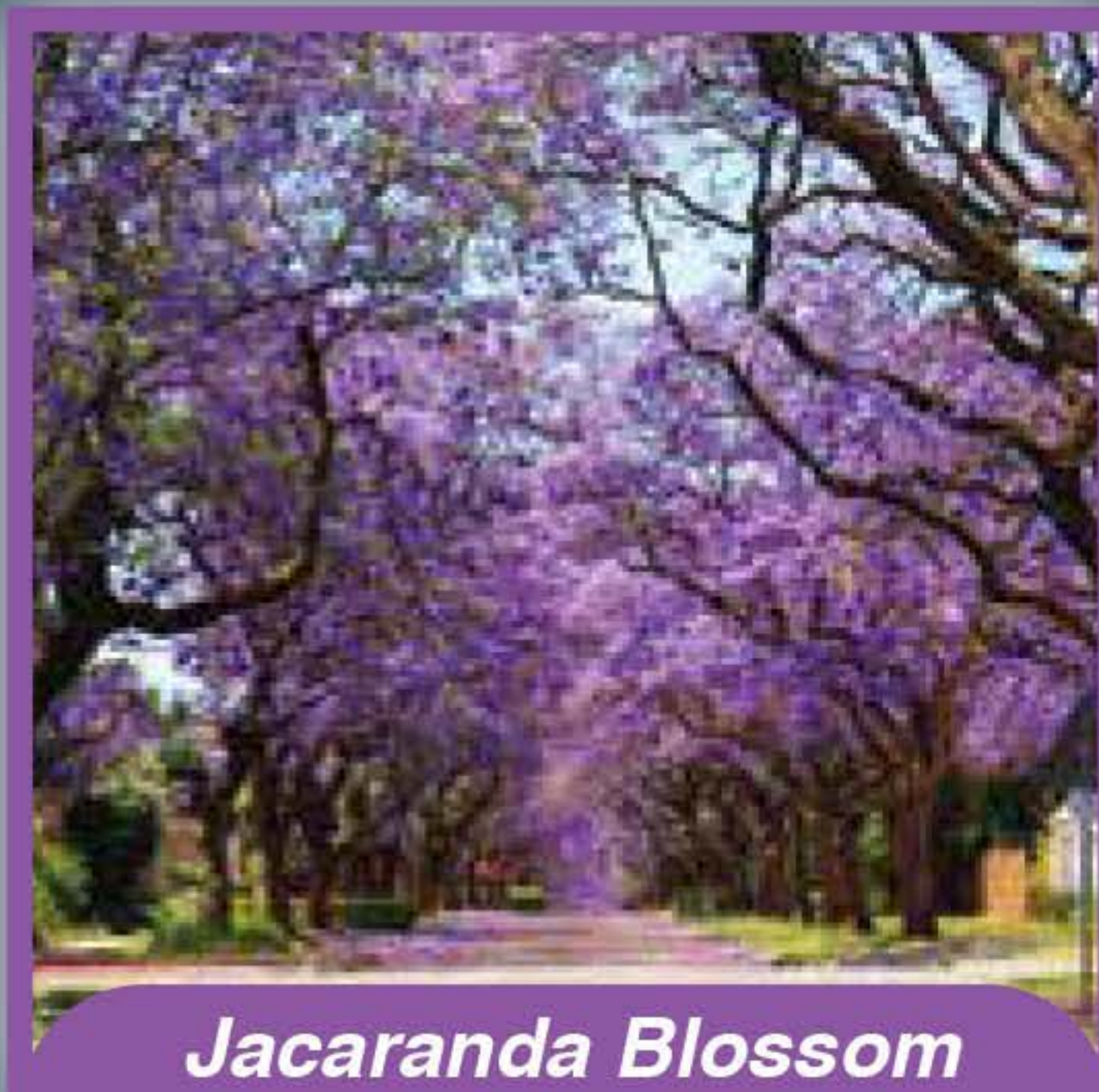


Bacalhau (Salt Cod)

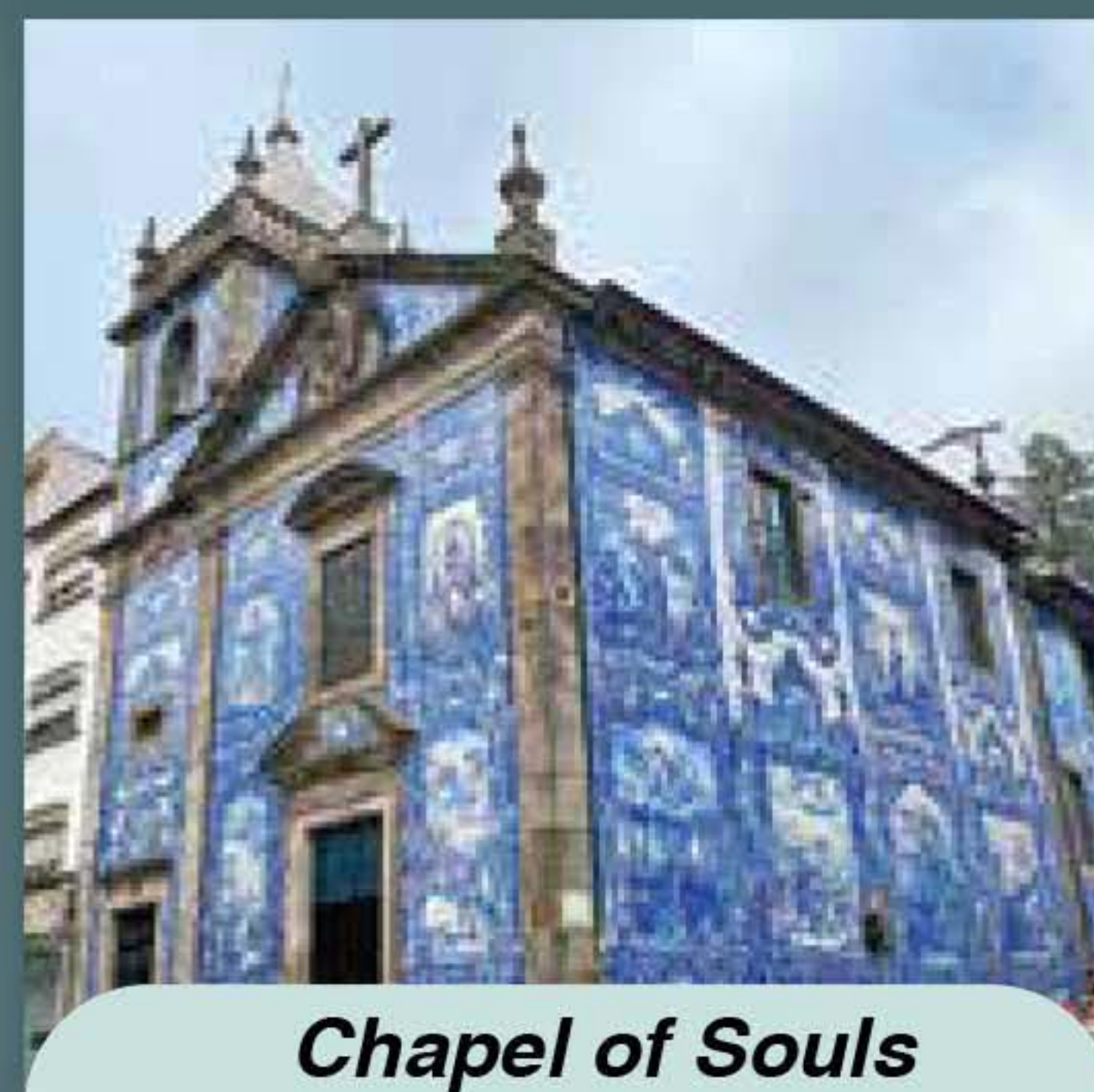
Must Visit Scenics



Belem Tower



Jacaranda Blossom



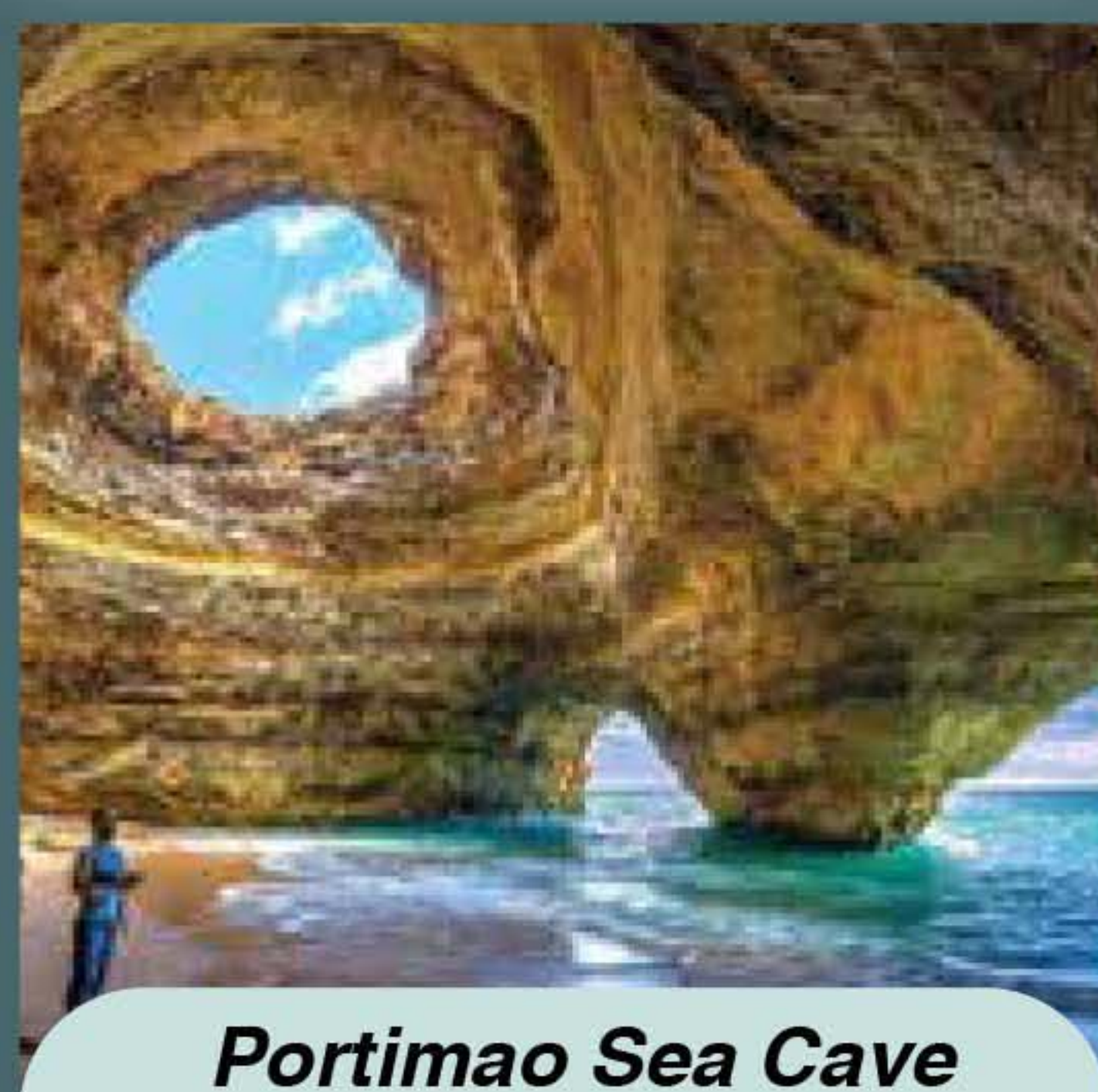
Chapel of Souls



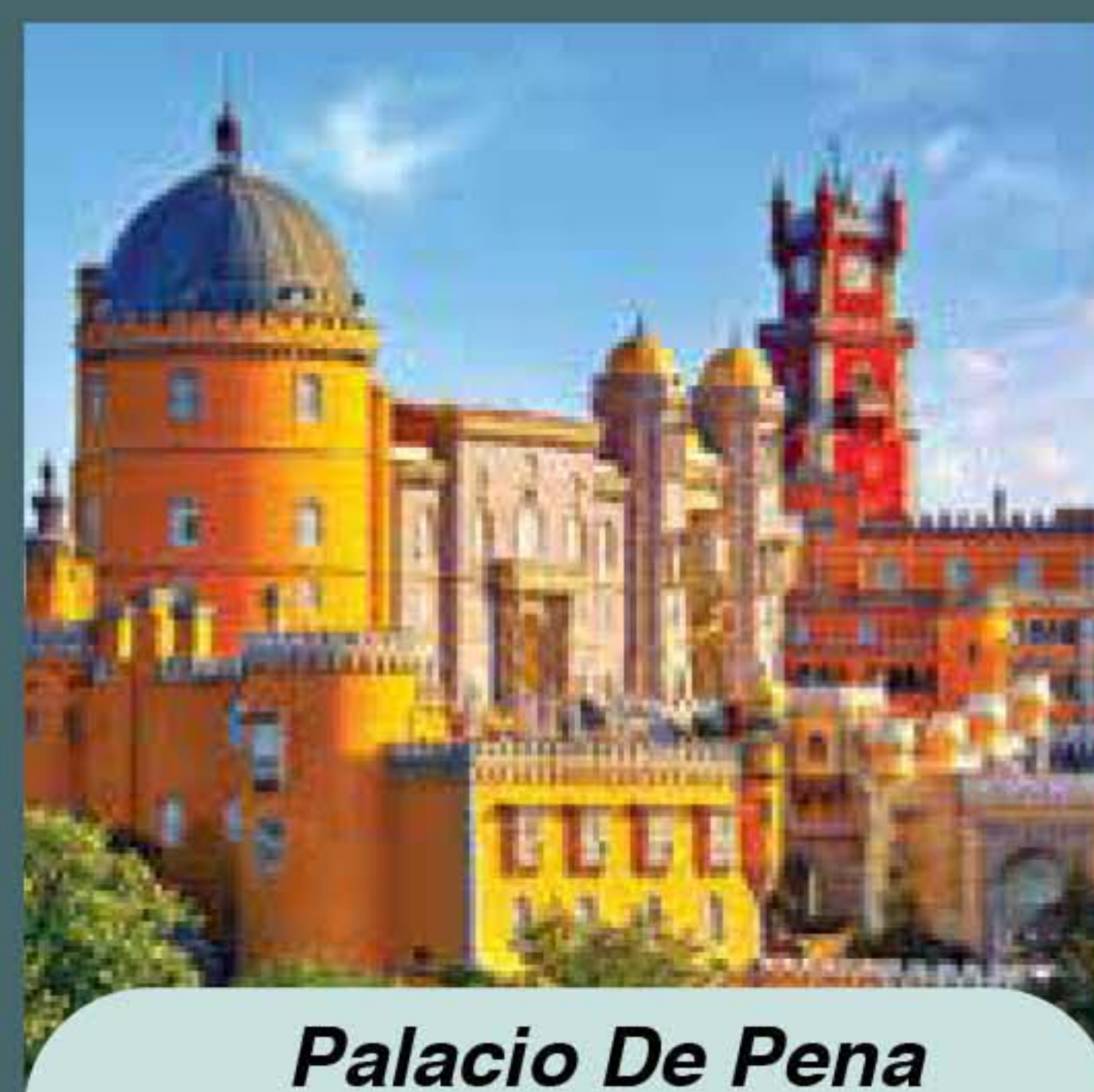
Livraria Lello



Cabo da Roca



Portimao Sea Cave



Palacio De Pena



Sao Bento Station

Travel Information

Portugal's Countries Weather

January: 8°C ~ 15°C
February: 9°C ~ 16°C
March: 10°C ~ 18°C
April: 12°C ~ 20°C
May: 14°C ~ 22°C
June: 16°C ~ 25°C

July: 18°C ~ 28°C
August: 18°C ~ 28°C
September: 17°C ~ 26°C
October: 15°C ~ 23°C
November: 12°C ~ 18°C
December: 9°C ~ 15°C

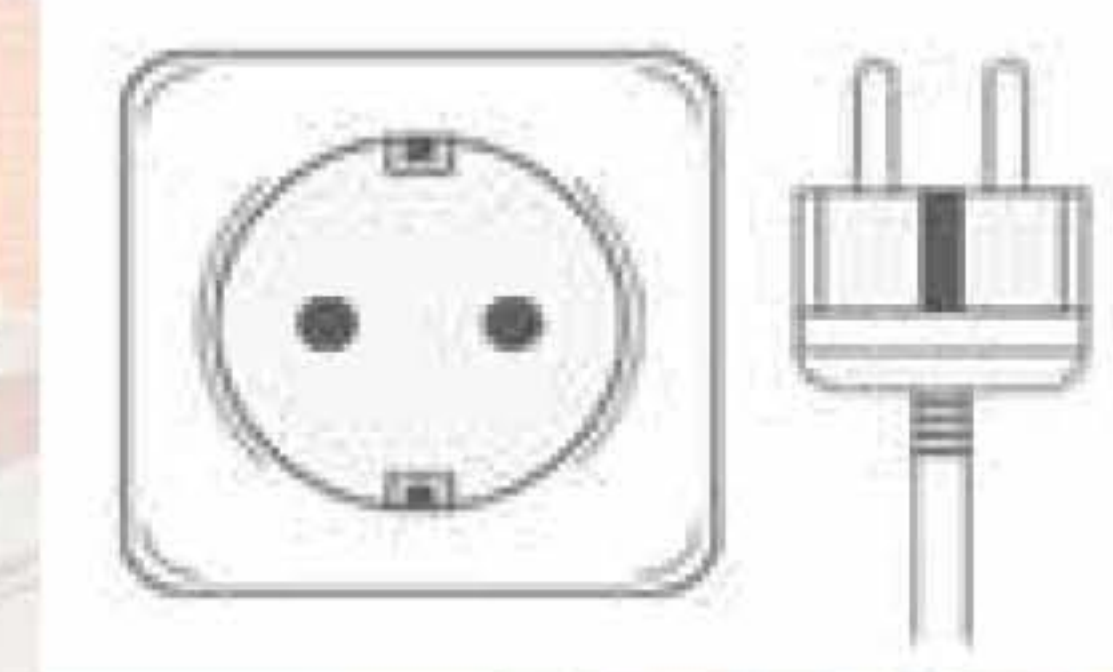
Currency

Euro

Time Zone

Spain (GMT+1)

Travel Adapter



Inclusion

- Return International flight tickets
Baggage not exceed 20kg
Handcarry 32cm(h) x 42cm(w) x 25cm(d)
** due to special geology & weather, it is very dangerous for overweight transport to travel and the local government is very strict about it.
- Accomodation (Twin Sharing basis)
- 7 nights stay in Hotel
- Meals as per itinerary
- All sightseeing as per itinerary
- Full Tour Excort by Tour Leader
- Private air-conditioned coach

Exclusion

- × Personal Travel Insurance
- × Excess Baggage Charge
- × Extra tipping for all services as option
- × Own expenses (Laundry Fees, Corkage Fees, Extra Meal etc.)
- × Any attraction tickets out from itinerary
- × Recommended Optional Tours