

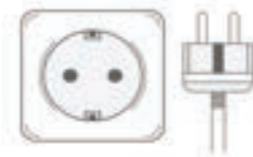
# Travel Information

## Iceland's Temperature

Jan: -3°C ~ 3°C  
Feb: -2°C ~ 2°C  
Mar: -2°C ~ 2°C  
Apr: 0°C ~ 5°C  
May: 3°C ~ 9°C  
Jun: 7°C ~ 11°C

July: 9°C ~ 11°C  
Aug: 8°C ~ 13°C  
Sept: 5°C ~ 9°C  
Oct: 2°C ~ 6°C  
Nov: 0°C ~ 5°C  
Dec: -1°C ~ 4°C

## Adapter



## Currency

Icelandic  
Króna / Euro

## Time Zone

Iceland (GMT+0)

## Luggage Guidelines

\*Due to the special geology & weather, it is very dangerous for overweight transport to travel in Iceland and the local government is very strict about it.



16" x 10" x 22.5" (LxWxH) 20kg



18" x 12" x 26.5" (LxWxH) 23kg



22" x 13" x 31" (LxWxH) 28kg

### Inclusion

1. International Flight Ticket
2. Accommodation (Twin sharing basis)
3. Meals & Sightseeing as per itinerary
4. Private air-conditioned coach
5. Full guided-tour
6. More than once Aurora Hunting
7. Complimentary Aurora photography
8. Guide to see Milky Way and Aurora
9. Mirror of Sky
10. Blue Lagoon Hot Bath
11. Glacier Walk Or Blue Ice Cave  
(Available only from Oct till Apr)

### Exclusion

1. Personal travel insurance
2. Excess Baggage Charge
3. Extra tipping for all services as option
4. Own expenses (Laundry Fees, Corkage Fees, Extra Meal etc.)
5. Any attraction tickets out from itinerary
6. Optional Tours
  - Glacier Lagoon boat tour - €120 per person
  - Snow Mobile to Glacier Top - €280 per person

### Note:



Autumn & Winter  
(Aug - Dec)

# Iceland Expedition

10Days 7Nights



100% Aurora Hunting Record!



'Most Northern Lights Photographs Taken In a Year by Loo Eng Wah'

Beautiful Planet Holiday Tour & Travel Sdn. Bhd. (58352M) KPL 5634  
 PG (HQ): 70-1-54 & 70-2-54 D'Piazza Mall Jalan Mahsuri, MK12, 11900 Penang. Tel: +604-375 8202 Website: www.bpholiday.com  
 KL: B1-33A-7 The Soho Suites KLCC, Kuala Lumpur, 50450 Kuala Lumpur Tel: +603-2181 6286 Website: www.bpholiday.com  
 (ICELAND) New Horizons Ehf (Kt. 541216 1700)  
 52 Holtsgata, 260 Reykjanesbar, Iceland. Tel: +354-857 0646 Website: www.n66.tours



# 10 Days 7 Nights Iceland Expedition

## ★ Our Highlights!

- 100% Aurora Hunting Record
- Complimentary Aurora Photography
- More than once Aurora Hunting
- Organised by 100% and world most northern light photos taken Aurora Hunter
- Glacier Walk / Blue Ice Cave included
- Blue Lagoon comfort package with drink and silica mask & towel
- Special cuisine: Icelandic Lobster, Icelandic Lamb Shrank, Arctic Char, Cod Fish

## 📷 FREE Aurora Photography



## ★ Unique Icelandic Meal



## ★ Soak in Blue Lagoon Hot Bath



### DAY 1: Departure

### DAY 2: Arrive Iceland - Keflavik (D)

### DAY 3: South Iceland (B/L/-)

Explore the Golden Circle, which includes visiting **Thingvellir National Park**, where you can witness the tectonic plate boundaries. Next, the geothermal wonders of **Geysir**, where hot springs erupt periodically, then the powerful **Gullfoss** waterfall. Don't miss the chance to interact with **Icelandic horses**, known for their friendly nature.



### DAY 4: South Iceland (B/L/-)

We will joining 3-hour **Glacier Walk** / 3-hour **Blue Ice Cave** (available only from October to April), providing a unique opportunity to explore Iceland's glacial beauty. Later, you'll visit **Jokulsarlon**, a stunning glacial lagoon and **Diamond Beach**.

Optional: **Glacier Lagoon Boat Tour** (120 Euro per person)



### DAY 5: Southeast Iceland (B/L/-)

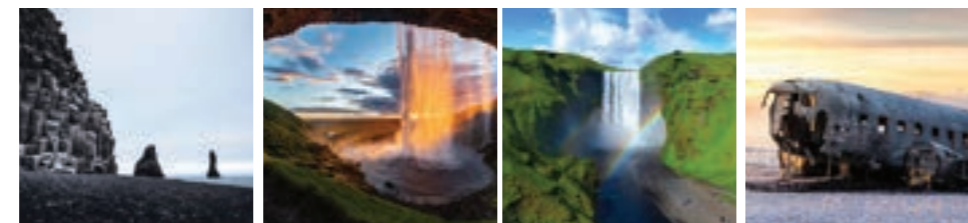
Visit to the **Vestrahorn** "Mirror of the Sky", an otherworldly natural attraction and also known as photography lover site. You can explore the **Viking Village** to learn about Iceland's rich history, and enjoy **Icelandic Lobster Cuisine** for lunch.



### DAY 6: South Iceland (B/L/-)

Visit the striking **Black Sand Beach**, as well as the majestic **Seljalandfoss** and **Skogafoss** waterfalls, where the cascading water plunges from towering cliffs, creating a mesmerizing natural spectacle. We will also visit the famous **Plane Wreck** (bus fare at your own expense).

Optional: **Snow Mobile to Glacier Top** (280 Euro per person)



## ★ Glacier Hike (Apr - Oct) (Seasonal)



## ★ Blue Ice Cave (Nov - Feb) (Seasonal)

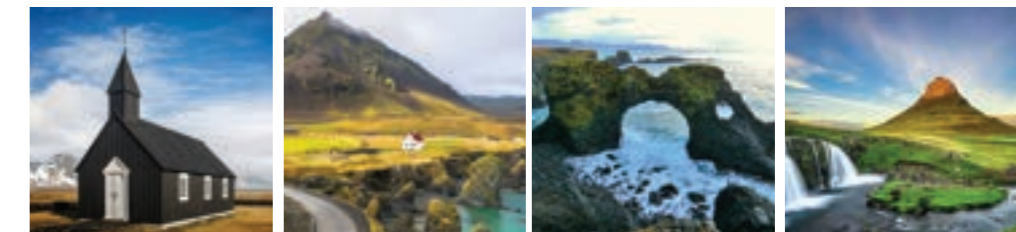


## ★ Unique Sky Mirror Experience



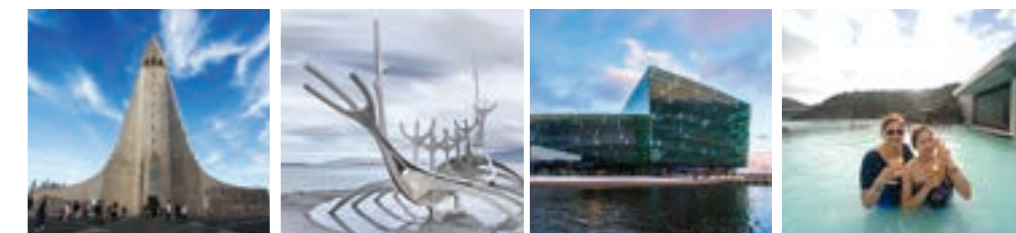
### DAY 7: West Iceland (B/L/-)

Our expedition will take us to the captivating **Snaefellsness Peninsula**. Here, you will have the opportunity to delve into the rich history and unique charm of the **Black Church**, wander through the picturesque **Arnastapi** fishing village, and witness the grandeur of the **Gatekttur Arch Rock** as it majestically rises from the rugged coastline. The pinnacle of our journey will be the iconic **Kirkjufellfoss**, famed for its striking resemblance to a colossal hat perched atop a mountain peak.



### DAY 8: Reykjavik, Iceland (B/L/-)

You'll visit **Hallgrímskirja Church**, a modern cathedral with a 73m-high tower inspired by Icelandic traditions. We will also see **The Sun Voyager** sculpture, and the stunning **Harpa** concert hall. Finally, you'll relax with a hot bath at the famous **Blue Lagoon**, with a comfort package included.



### DAY 9: Reykjavik - Transit City (B)

Breakfast at hotel then transfer to Airport. Leaving Iceland

### DAY 10: Arrive Malaysia

## Icelandic Cuisine

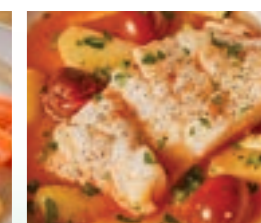
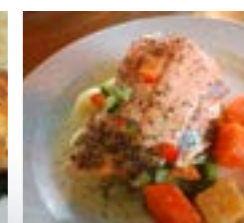
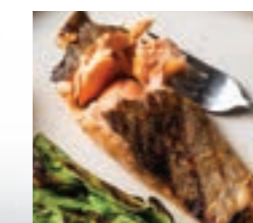
### Icelandic Lobster Cuisine



### Icelandic Lamb Shrank



### Arctic Char



### Cod Fish



'Most Aurora Photographs  
Taken In a Year'

by Loo Eng Wah

Itineraries are subject to change or cancellation due to any unforeseen conditions, including but not limited to, adverse weather, traffic problem, etc.